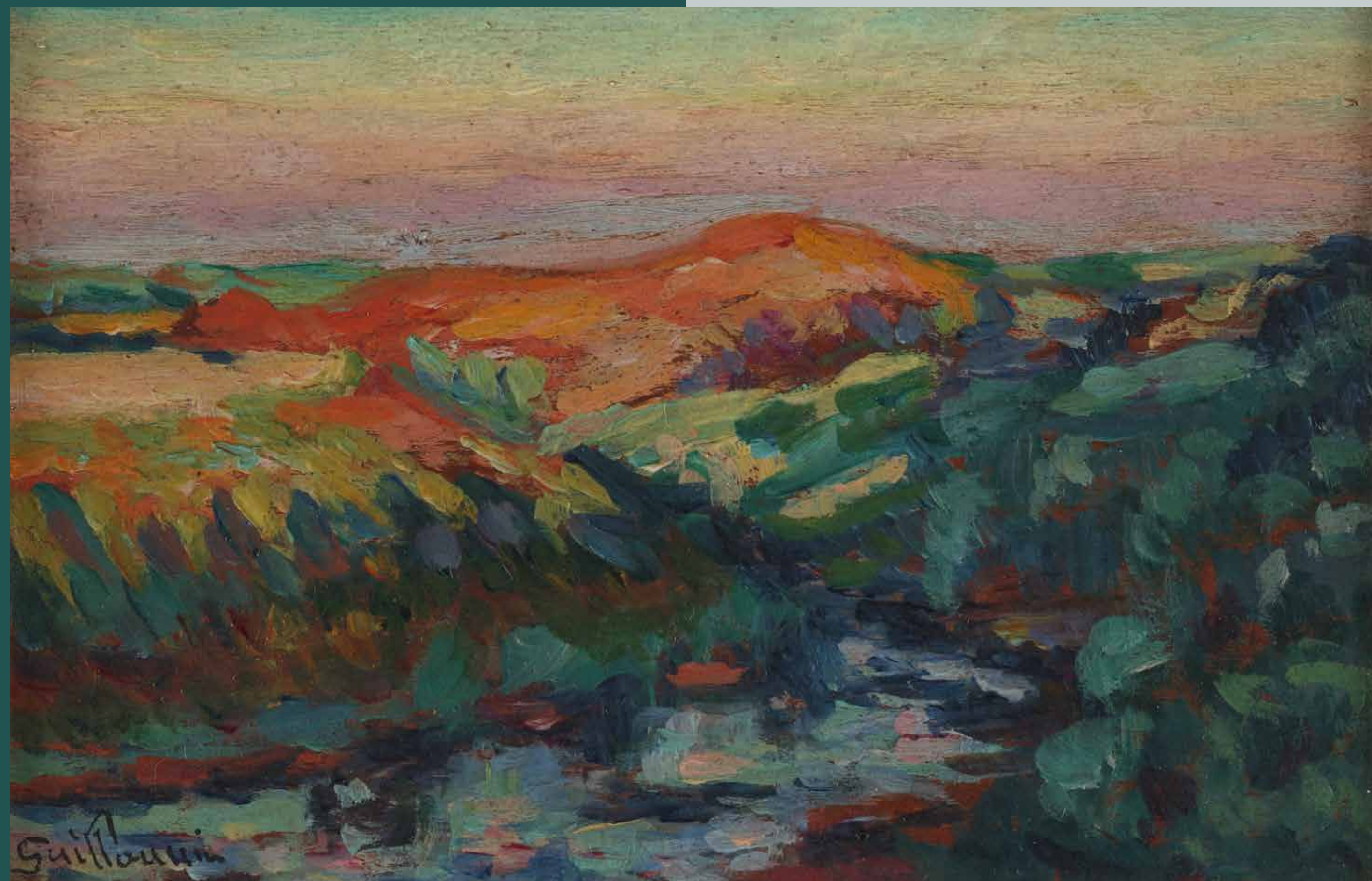




OZNAKE NA POLEDINI DJELA MARKINGS ON THE BACK OF THE ARTWORK



1.
ARMAND GUILLAUMIN
Krajolik / Landscape
Francuska, poč. XX. st. / France, beginning of 20th c.
ulje na drvu / oil on panel
8,5 cm x 13,5 cm
ATM 764

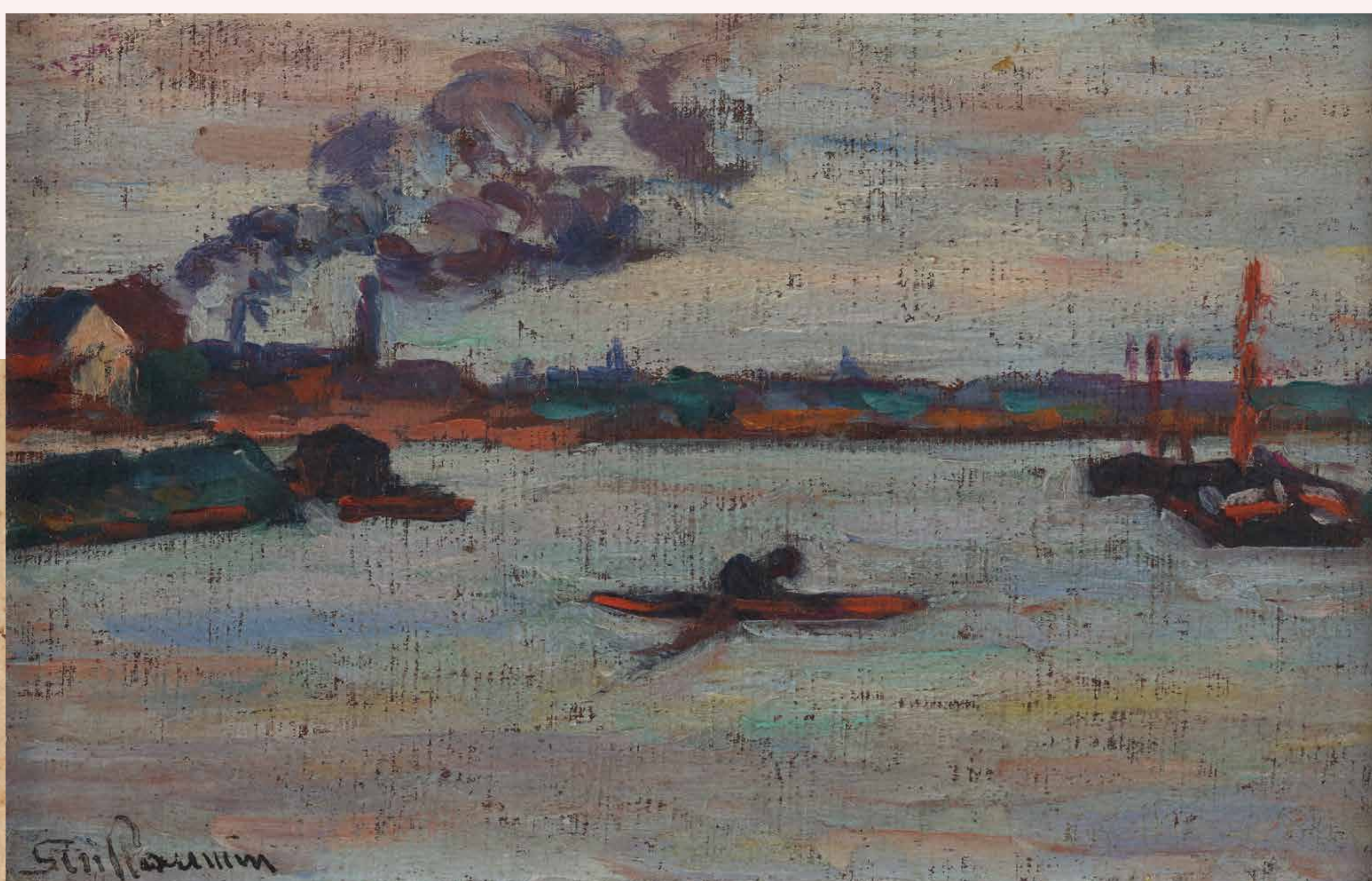
2. Poledina sl. 1 / The reverse of fig. 1



OZNAKE NA POLEDINI SLIKA MOGU BITI VRLO RAZNOLIKE TE PRUŽATI NIZ INFORMACIJA O AUTORU DJELA, smještaju i promjenama smještaja djela, vlasnicima i prijenosu vlasništva djela poput aukcija, darovanja i slično, te izložbama na kojima je djelo izlagano. Također, materijal nositelja slikanoga sloja, način na koji je s njime postupano te njegovo stanje, a što je vidljivo tek s poledine slike, mogu pružiti vrijedne informacije o podrijetlu djela, naknadnim intervencijama ili uvjetima u kojima je djelo čuvano.

THE MARKINGS ON THE BACK OF THE PAINTING CAN BE very diverse and provide a range of information on the author of the art piece, its storage locations, owners and transfer of ownership of the art piece, such as auctions, donations and the like, as well as exhibitions where the artwork was shown. Also, the material of the surface with the painted layer, the way it was treated and its condition, visible only from the back of the painting, can provide valuable information about the origin of the piece, subsequent interventions into it or conditions in which it was stored.

IAKO SE POTPISI AUTORA NAJČEŠĆE NALAZE NA PREDNJOJ STRANI SLIKE, PONEKAD SE MOGU PRONAĆI I NA NJEZINOJ POLEDINI. Autentičan potpis pružit će (ili potvrditi) atribuciju djela, a ako se autorov potpis mijenjao tijekom vremena, može omogućiti i precizniju dataciju djela. Uz svoj potpis autori djelo ponekad imenuju, datiraju, označe mjesto nastanka ili napišu posvetu koja nam pruža više informacija o tome za koga je djelo nastalo ili koja mu je namjena.



3.
ARMAND GUILLAUMIN
Krajolik uz more / Landscape by the Sea
Francuska, poč. XX. st. / France, beginning of 20th c.
ulje na drvu / oil on panel
8,5 cm x 12,8 cm
ATM 765

4. Poledina sl. 3 / The reverse of fig. 3

ALTHOUGH AUTHOR'S SIGNATURES ARE USUALLY FOUND ON THE FRONT OF THE PAINTING, SOMETIMES THEY CAN BE found on the back. An authentic signature will provide (or confirm) the attribution of the art piece, and if the author's signature has changed over time, it may allow for a more accurate dating of the artwork. With their signature, authors sometimes name, date, mark the place of origin or write a dedication that gives us more information about who the artwork was created for or what purpose it served.